

Guidance and responses were provided based on information known on 03.31.2022 and may become out of date. Guidance is being updated rapidly; users should look to CDC and NE DHHS guidance for updates.



Infection Control Assessment
and Promotion Program

NEBRASKA

Good Life. Great Mission.

DEPT. OF HEALTH AND HUMAN SERVICES

COVID-19 and LTC

March 31, 2022

Presentation Information:

Panelists today are:

Dr. Salman Ashraf

salman.ashraf@unmc.edu

Kate Tyner, RN, BSN, CIC

lttyner@nebraskamed.com

Margaret Drake, MT(ASCP),CIC

Margaret.Drake@Nebraska.gov

Sarah Stream, MPH, CDA, FADAA

sstream@nebraskamed.com

Josette McConville, BSN, RN, CIC

jmccconville@nebraskamed.com

Rebecca Martinez, BA, BSN, RN, CIC

remartinez@nebraskamed.com

Jody Scebold, EdD, MSN, RN

jodscebold@nebraskamed.com

Chris Cashatt RN, BSN, CIC

ccashatt@nebraskamed.com

Daniel Taylor, DHHS

Daniel.Taylor@nebraska.gov

Becky Wisell, DHHS

Becky.Wisell@nebraska.gov

Cindy Kadavy, NHCA

cindyk@nehca.org

Kierstin Reed, LeadingAge

Kierstin.reed@leadingagene.org

Melody Malone

Melody.Malone@tmf.org

Debi Majo, BSN, RN

Deborah.Majo@tmf.org

Carla Smith, RN, CDP, IP-BC, AS-BC

Carla.Smith@tmf.org

Moderated by Marissa Chaney

MaChaney@nebraskamed.com

Slides and a recording of this presentation will be available on the ICAP website:

<https://icap.nebraskamed.com/covid-19-webinars/>

Use the Q&A box in the webinar platform to type a question. Questions will be read aloud by the moderator.

If your question is not answered during the webinar, please either e-mail it to NE ICAP or call during our office hours to speak with one of our IPs.



Continuing Education Disclosures

- 1.0 Nursing Contact Hour and 1 NAB Contact Hour is awarded for the LIVE viewing of this webinar
- In order to obtain nursing contact hours, you must be present for the entire live webinar and complete the post webinar survey
- No conflicts of interest were identified for any member of the planning committee, presenters or panelists of the program content
- This CE is hosted Nebraska Medicine along with Nebraska ICAP and Nebraska DHHS
- Nebraska Medicine is approved as a provider of nursing continuing professional development by the Midwest Multistate Division, an accredited approver by the American Nurses Credentialing Center's (ANCC) Commission on Accreditation

TMF Health Quality Institute CMS Quality Improvement Organization

Melody Malone, PT, CPHQ, MHA
Quality Improvement Specialist

Updated NHSN Tools

- [Resident Impact and Facility Capacity Instructions](#)
 - Supplies and Personal Protective Equipment [Form](#), [Instructions](#), [CSV File Template](#) & [File Layout](#)
 - [COVID-19 Module Pathway Page](#)
 - Updated 3/24/2022
-
- [Uploading Group COVID-19 CSV Data File Instructions](#) Updated 2/2022

New NHSN Resources

- [Operational Guidance COVID-19 Vaccination Reporting Rule](#)
- [Event Level Vaccination Form Quick Reference Guide](#) provides a walk through of the application
- **Event-Level COVID-19 Vaccination Forms** for resident and Healthcare Workers – in the NHSN application.
 - › Only Level 3 users can have access to the tool
 - › [Updated Resident Data Tracking Tool](#)
 - › [Updated Staff Data Tracking Tool](#)

NHSN Webinars

Event-Level COVID-19 Vaccination Form Training

2 sessions offered – same training in each session.

Thursday, March 31, 2022, 2:00 p.m. ET

[Register NHSN March 31 Training](#)

Report an Issue With the New Vaccination Forms

- **Email:** nhsn@cdc.gov
- **Put in the subject line of your email:** **Event-Level COVID-19 Vaccination Form Training**
- **Add in the body of the email:**
 - › Any screenshots and details.
 - › Include: your name & role, phone number and facility name/address
 - › Facility NHSN Org ID: Facility CCN:

Email to Report NHSN Issues

- **Send to:**

nhsn@cdc.gov

DNH_Enforcement@cms.hhs.gov

DNH_TriageTeam@cms.hhs.gov

Include your TMF consultant

- Subject line: (Be specific to the issue: Error Messages and Issues in NHSN)

Email to Report NHSN Issues

- Email Body:

Please Reply ALL!

Include a bit more detail, ex. I was able to log into SAMS but got this error message (see screenshot below) when accessing into NHSN, saving XX pathway...whatever it might be.

Add SCREENSHOT(s):

- Facility NHSN Org ID: Facility CCN:
- Your name, role
- Facility Name, phone number and address.

Point of Care (POC) Test Reporting

- Continue to report into NHSN the negative tests, until notified by CMS that you can stop reporting them.
- Ensure each resident and staff member reported has a Unique Identifier Number
- Use the same Unique Identifier Number for vaccination reporting when using the new vaccination forms in NHSN.

CMS-Targeted COVID-19 Training

For frontline nursing home staff and management learning

- Available through the [CMS Quality, Safety & Education Portal \(QSEP\)](#)
- Five frontline nursing home staff modules with three hours total training time
- Ten management staff modules with four hours total training time
- [QSEP Group Training steps – English](#)
- [QSEP Group Training steps – Spanish](#)

TMF QIN-QIO Videos and Resources

- **New:** [Influenza Immunization Change Package for Health Care Teams](#)
- **New:** [COVID-19 Vaccination Change Package for Health Care Teams](#)

Upcoming TMF QIN-QIO Training

April 5, 2022

**Nursing Home Office Hours: Vaccine Safety and Efficacy:
Responding to Misinformation**

10:30 a.m. CT

[Register](#)

April 12, 2022

**Nursing Home Office Hours: COVID-19 Impacts on
Nursing Home Measures: Hospital Admissions and
Readmissions**

10:30 a.m. CT

[Register](#)

Upcoming TMF QIN-QIO Training

April 19, 2022

Nursing Home Office Hours: Q&A

10:30 a.m. CT

[Register](#)

April 21, 2022

LTC Connect: Compassion Fatigue and Burnout

1:30 p.m. CT

[Register](#)

Upcoming TMF QIN-QIO Training

April 26, 2022

**Nursing Home Office Hours: How to Develop a
Vaccine Clinic and Community Partnerships**

10:30 a.m. CT

[Register](#)

TMF QIN-QIO Resources

[TMF Events Calendar](#)

[How to Create an Account on the TMF Network](#)

Website: tmfnetworks.org

Need Assistance?

Email nhnetwork@tmf.org.

Submit requests for help with NHSN and/or quality improvement assistance.

Nebraska Statistics



Nebraska Statistics

Cases

DAILY NEW CASES

• **5.6** PER 100K

INFECTION RATE

• **1.13**

POSITIVE TEST RATE

• **3.6%**



Over the last week, Nebraska has averaged 108 new confirmed cases per day (5.6 for every 100,000 residents). [About this data](#)

Share 

<https://covidactnow.org/?s=22441170>

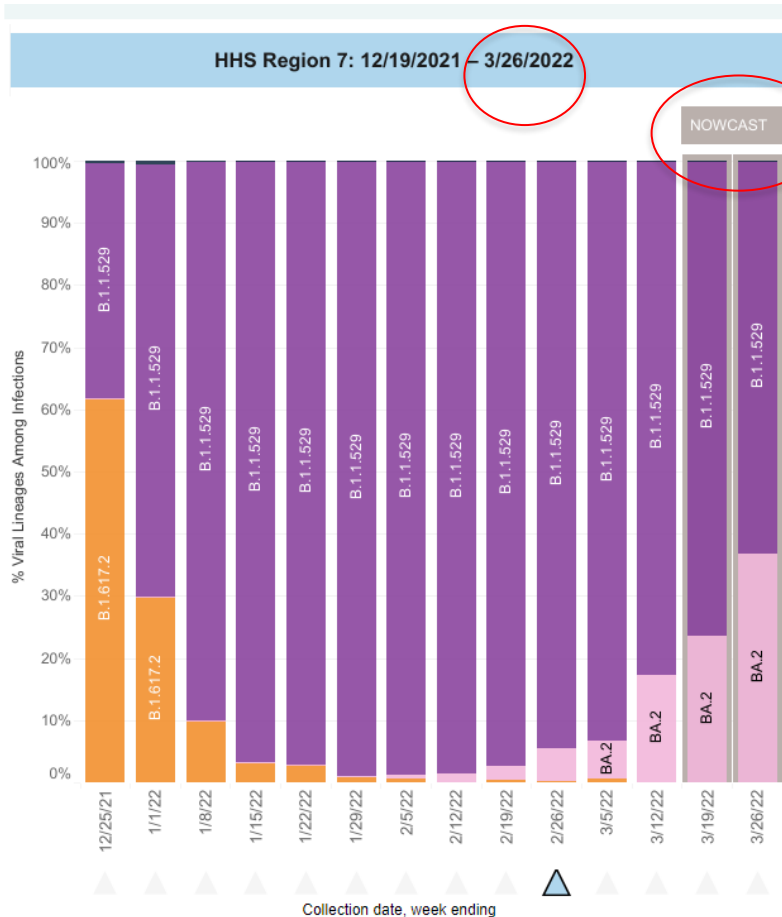


Week	Daily New Cases/ 100K	Infection Rate	Positive Test Rate	ICU Capacity Used	Vaccinated 1+	Vaccinated + Booster
11/18/2021	44.7	1.09	14.9%	80%	62.6%	
12/02/2021	38.1	0.94	17.6%	80%	63.7%	
12/16/2021	46.1	1.01	16.2%	83%	65.3%	
12/30/2021	46.1	1.04	16.2%	82%	66.3%	
01/13/2022	174.6	1.22	35.9%	84%	67.2%	
01/20/2022	215.0	1.31	35.6%	82.0%	67.4%	
01/27/2022	211.4	1.11	37.7%	78%	68.4%	
02/03/2022	104.8	0.80	30.8%	79%	68.7%	
02/10/2022	53.6	0.57	28.4%	84%	68.9%	
02/17/2022	22.2	0.42	14.8%	80%	69.1%	
02/24/2022	10.7	0.37	11.6%	73%	69.2%	29.9%
03/03/2022	3.8	0.43	8.1%	73%	69.4%	30.2%
03/10/2022	6.5	0.64	7.3%	71%	69.5%	30.3%
3/24/2022	2.1	0.63	4.5%	71%	69.7%	30.7%
3/31/2022	5.1	1.13	3.6%	68%	69.7%	30.7%

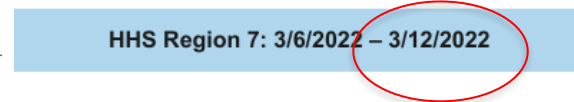
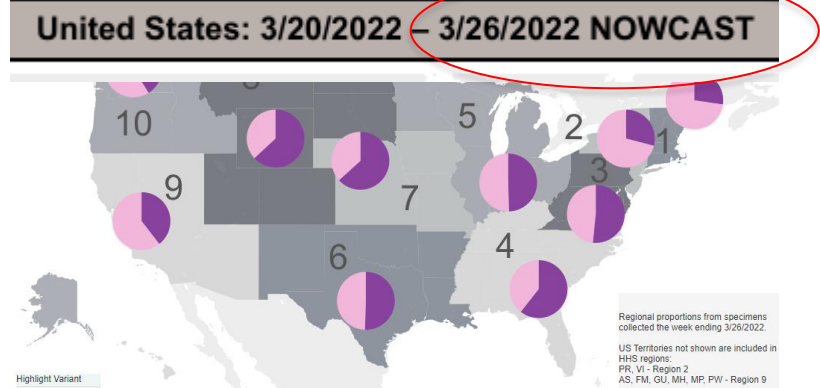
<https://covidactnow.org/?s=22441170>



What's happening with BA2?



CDC Variant Proportions

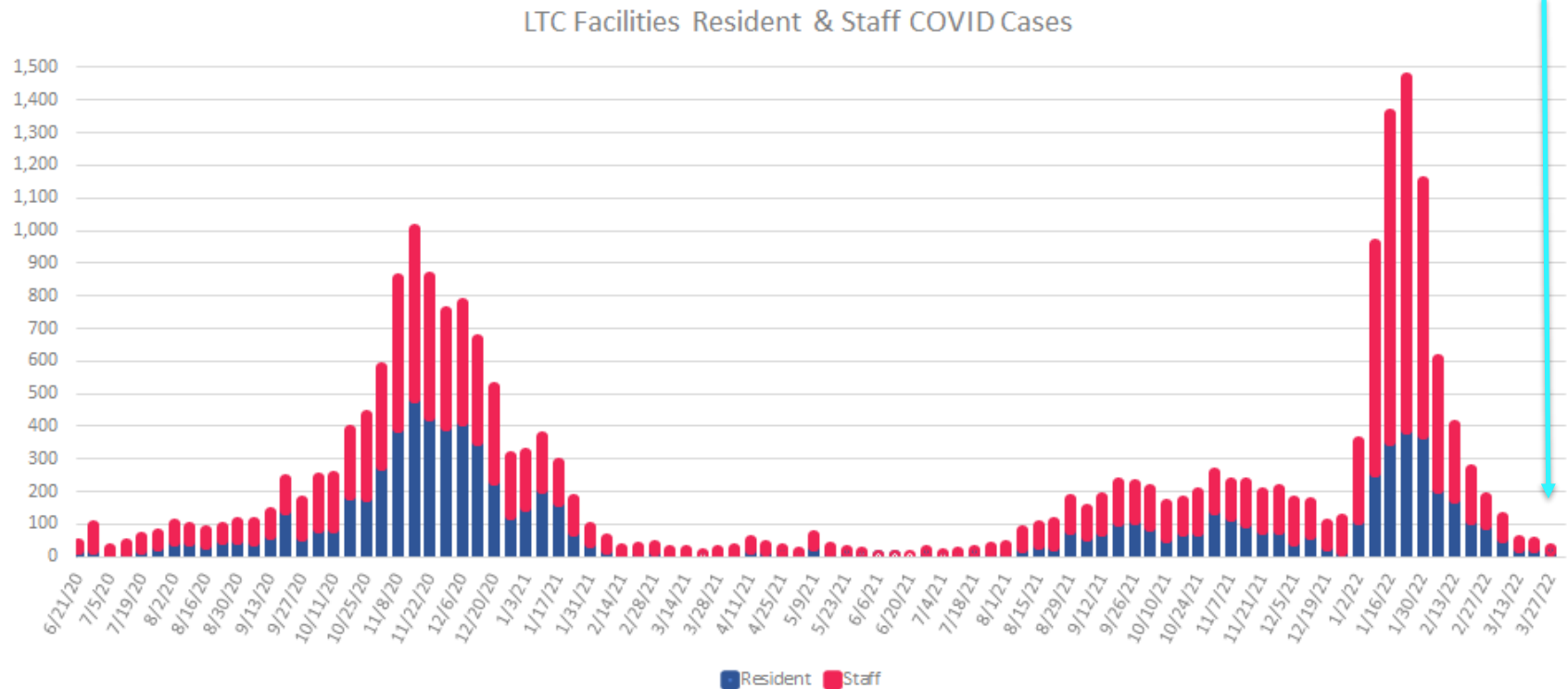


Region 7 - Iowa, Kansas, Missouri, and Nebraska

WHO label	Lineage #	US Class	%Total	95%CI
Omicron	B.1.1.529	VOC	82.7%	74.8-88.9%
	BA.2	VOC	17.3%	11.1-25.2%
Delta	B.1.617.2	† VOC	0.0%	NA
Other	Other*	†	0.0%	NA

Nebraska LTC Facility COVID-19 Cases

25 total cases
14 Staff
11 Residents



**Updated: 3/28/2022

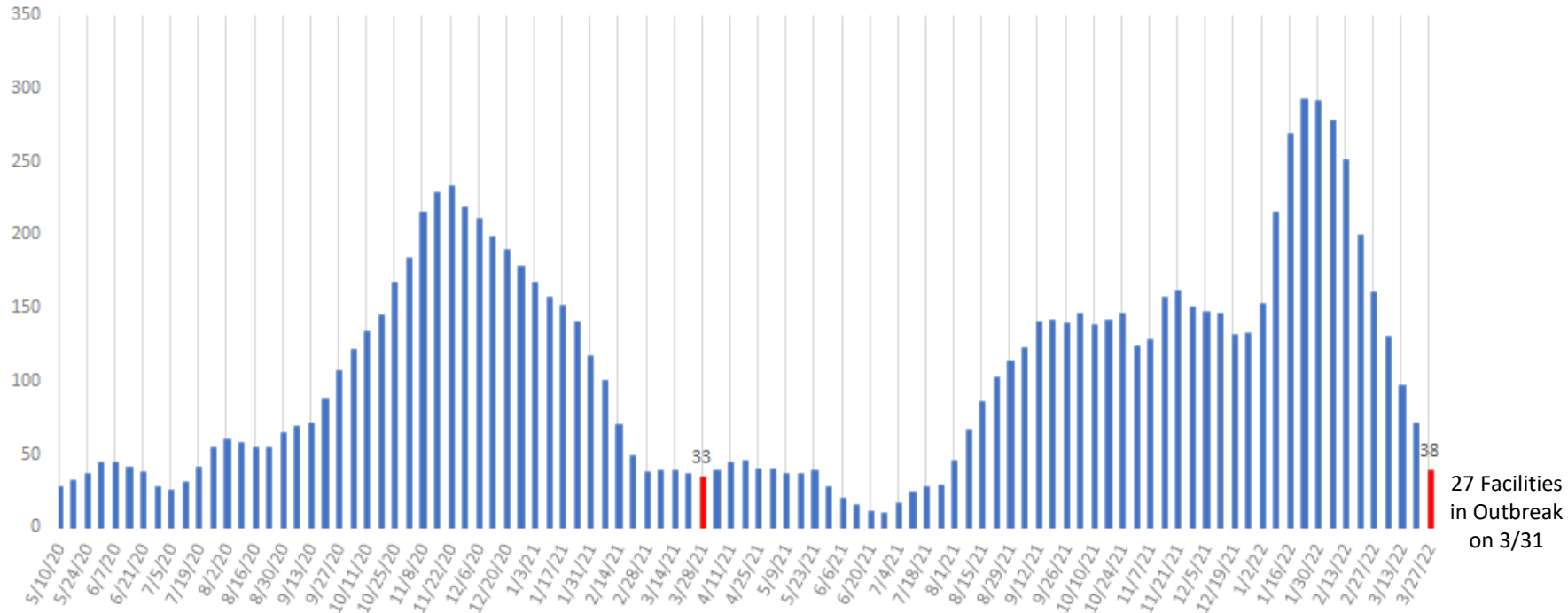
Source: Unofficial Counts Compiled by Nebraska ICAP based on data reported by facilities and DHHS; Actual numbers may vary slightly



Nebraska LTC Facility COVID-19 Cases

Nebraska LTC Facilities in Outbreak by Week

Peak Number During Each Week



27 Facilities
in Outbreak
on 3/31

**Updated: 3/28/2022

Source: Unofficial Counts Compiled by Nebraska ICAP based on data reported by facilities and DHHS; Actual numbers may vary slightly. Numbers reflect the peak during the week.



Blue County Q and A

We're in a blue county, now what?



Vaccine Update

Media Statement 3/29/22: CDC Recommends Additional Boosters for Certain Individuals

Following FDA's regulatory action today, CDC is updating its recommendations to allow certain immunocompromised individuals and people over the age of 50 who received an initial booster dose at least 4 months ago to be eligible for another mRNA booster to increase their protection against severe disease from COVID-19.

- Adults who received a primary vaccine and booster dose of Johnson & Johnson's Janssen COVID-19 vaccine at least 4 months ago may now receive a second booster dose using an mRNA COVID-19 vaccine.
- Getting a second booster dose is not necessary to be considered up to date at this time. [COVID-19 Vaccine Booster Shots | CDC](#)

[CDC Recommends Additional Boosters for Certain Individuals | CDC Online Newsroom | CDC](#)



Vaccine Update

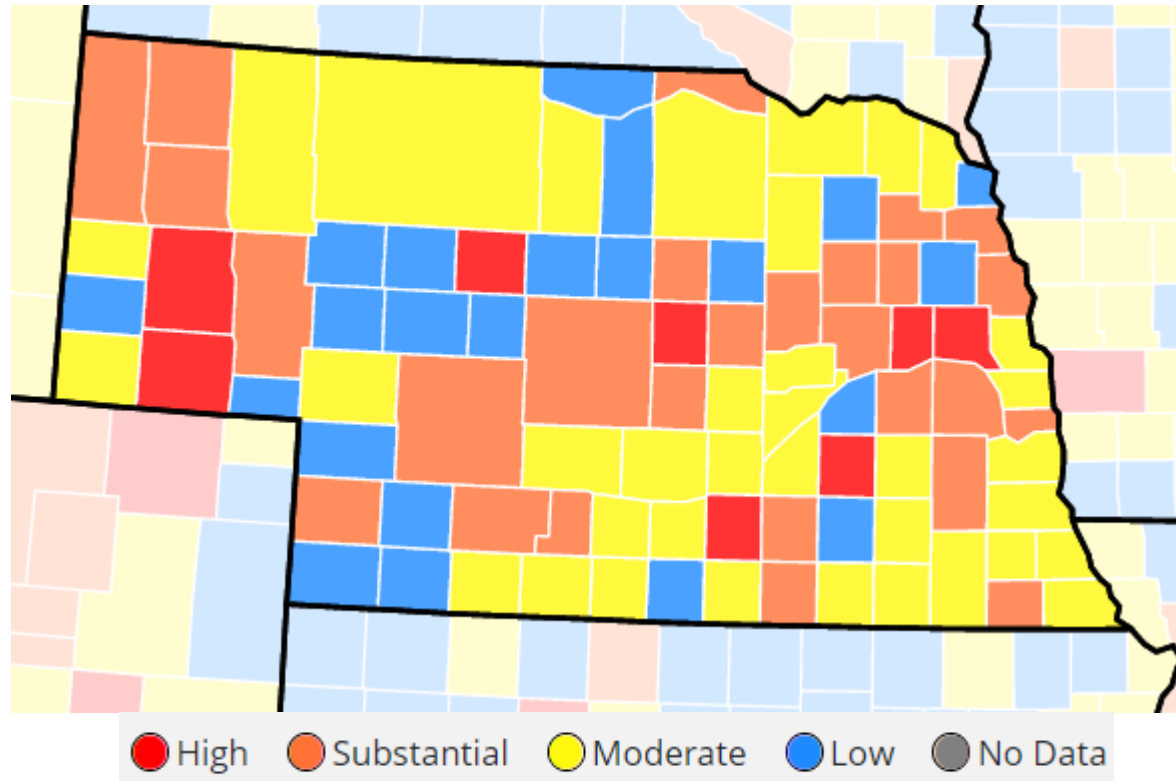
[CDC Recommends Additional Boosters for Certain Individuals | CDC Online Newsroom | CDC](#)

CDC continues to recommend that all eligible adults, adolescents, and children 5 and older be up to date on their COVID-19 vaccines, which includes getting an initial booster when eligible.

[COVID-19 Incidence and Death Rates —MMWR \(cdc.gov\)](#)

During the recent Omicron surge, those who were boosted were 21-times less likely to die from COVID-19 compared to those who were unvaccinated, and 7-times less likely to be hospitalized.

Determining Community Transmission



Monitoring Transmission Levels

Facilities should monitor their level of community transmission every other week (e.g., first and third Monday of every month).

- ✓ If the level of community transmission increases to a higher level of activity, the facility should begin testing staff at the frequency shown in the table above as soon as the criteria for the higher activity level are met.
- ✓ If the level of community transmission decreases to a lower level of activity, the facility should continue testing staff at the higher frequency level until the level of community transmission has remained at the lower activity level for at least two weeks before reducing testing frequency.

[QSO-20-38-NH REVISED \(cms.gov\)](#)

Source Control in Substantial/ High Counties

If the nursing home's county COVID-19 community level of transmission is substantial to high, all residents and visitors, regardless of vaccination status, should wear face coverings or masks and physically distance at all times.



[QSO-20-39-NH REVISED \(cms.gov\)](#)

Source Control in Low/ Moderate Counties

It is safest to implement universal use of source control for everyone in a healthcare setting.

However, residents who **are up to date with all recommended COVID-19 vaccine doses in areas of low to moderate transmission** can choose to not use source control when in communal areas of the facility

- ✓ Residents at increased risk for severe disease should still consider continuing to practice physical distancing and use of source control

Infection Control: Severe acute respiratory syndrome coronavirus 2 (SARS-CoV-2) | CDC



Source Control in Low/ Moderate Counties

- ✓ In areas of low to moderate transmission, the safest practice is for residents and visitors to wear face coverings or masks and physically distance, particularly if either of them is at increased risk for or are not up-to-date with all recommended COVID-19 vaccine doses.
- ✓ Residents, regardless of vaccination status, can choose not to wear face coverings or masks when other residents are not present and have close contact (including touch) with their visitor.
 - Residents (or their representative) and their visitors, who are not up-to-date with all recommended COVID-19 vaccine doses, should be advised of the risks of physical contact prior to the visit.

[QSO-20-39-NH REVISED \(cms.gov\)](#)

Low/Moderate Transmission Q&A

Can residents with not up to date vaccine status sit together at a table, or do they need to be at least 6 ft apart from each other?

- ✓ Residents that are not up to date need to be masked and physically distanced



Low/Moderate Transmission Q&A

We continue to use barriers in the dining room with only two residents at a table. Do we need to continue using the barriers until the transmission rate in the county goes to low?

- ✓ Barriers are an option for facilities to use to keep residents safe when dining. Their use is not mandatory. Consider continued use of a barrier when not up to date residents are eating at the same table



Can we place more than two residents at a table without a barrier at the moderate transmission level?

- ✓ Residents that are not up to date should be physically distanced when eating. Consider use of a barrier when eating at the same table

Low/Moderate Transmission Q&A

If a resident with not up to date vaccine status attends an activity, should the entire group of up to date residents mask?

- ✓ The not up to date resident should be masked and maintain distancing as much as possible

Can we serve food/snacks at an activity without a barrier or social distancing?

- ✓ Residents that are not up to date should be physically distanced when eating. Consider use of a barrier when eating at the same table



Outdoor Transmission Q&A

If a singer performs outdoors, can we socially distance the singer from the crowd and have the singer not wear a mask? Do the residents need to wear a mask?

- ✓ If resident does not have an up to date vaccine status, they should mask and socially distance
- ✓ Singing is a high-risk activity. Have the singer distanced from residents.

When a group of residents are together outside and one or two are **not** up to date vaccine status, may all of the residents take their masks off regardless of vaccination status?

- ✓ Outdoor visits and activities generally pose a lower risk due to increased space and airflow
- ✓ If resident does not have an up to date vaccine status, they should mask and physically distance



Low Transmission Q&A

Our county is blue- so does that mean that we can stop testing employees with not up to date vaccine status?

- ✓ Routine testing of staff who are not up to date on vaccine status is not recommended in areas of low transmission (blue). [QSO-20-38-NH REVISED \(cms.gov\)](#)
- ✓ Note: If your facility policy specifies a testing plan for staff with a vaccine exemption, facility policy should be followed.

When an employee receives a booster dose of COVID vaccine, do we need to test them for 2 weeks after the shot (in areas of moderate to high transmission)?

- ✓ No, a person is considered “boosted” and up to date right after getting their first booster dose. [COVID-19 Vaccine Booster Shots | CDC](#)

ICAP Updates and Information



Upcoming NETEC Webinar 4/6/22 Featuring OSHA

National Emerging Special Pathogens Training and Education Center

Working together to increase the capability of the U.S. public health and health care systems to safely and effectively manage special pathogens.

On April 6th at noon CST, the National Emerging Special Pathogens Training and Education Center (NETEC) will be hosting a webinar on *Respiratory Protection Regulation: Navigating Standards and Protecting Workers*

Registration will be available soon on www.netec.org

Preparing Health Care Workers for Special Pathogen Events

When it comes to special pathogens, education is essential. We offer courses and training for nurses, physicians, emergency responders, and other health care professionals. Our educational resources provide facilities and individuals with preparedness best practices.

All of our services are free. Take an online course for continuing education credit (also free) or view archived materials in our Resource Library.



New Test-to-Treat Finder

Find COVID-19 Medication ⓘ

Omaha, NE, USA ✕

0 68.6 mi 250

📅 Results:63 ↕

> Locations with testing, medical visits, and medication (Test-to-Treat) 8

> Locations to fill a prescription 55

How to get medication

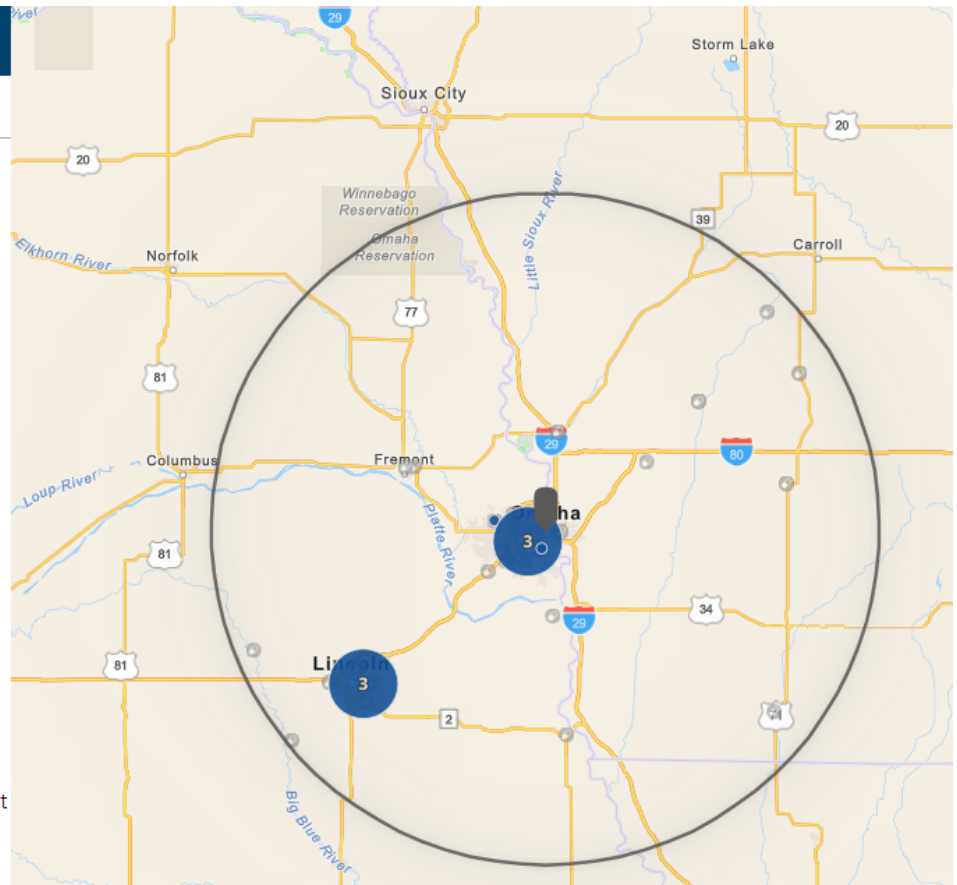
1. Locations to get testing, medical visits, and medication (Test-to-Treat)

Some pharmacy clinics and health centers can prescribe and give you medication at the same location.

[Learn more about the Test-to-Treat program.](#)

2. Locations to fill a prescription

Any healthcare provider can evaluate and prescribe you COVID-19 medication just as they normally would. You can fill those prescriptions at any location in this tool.





Nebraska Free COVID-19 Testing

Visit the Nebraska DHHS website and find the COVID-19 Testing Page.

- These rapid tests are available for pick up for the public
- <https://dhhs.ne.gov/Pages/COVID-19-Testing.aspx>

Free rapid at-home test kits are available at locations throughout the state such as Local Health Departments (LHDs), public libraries, and other community partners.

Getting a kit and taking an at-home test is as easy as 1 – 2 – 3.

1. Find a location with at-home test kits .
2. Go to that location and pick up your test kit.
3. Take the test at home. See instructions for using your at-home test kit in both English & Spanish .

Webinar CE Process

1 Nursing Contact Hour and 1 NAB Contact Hour is offered for attending this LIVE webinar.

Individual surveys must be completed for each attendee.

Questions? Contact Marissa at:

Machaney@nebraskamed.com 402-552-2881

Nursing Contact Hours:

- Completion of survey is required.
 - The survey must be specific to the individual obtaining credit. (i.e.: 2 people cannot be listed on the same survey)
- One certificate is issued monthly for all webinars attended
- Certificate comes directly from ICAP via email
- Certificate is mailed by/on the 15th of the next month

NAB:

- Completion of survey is required.
 - The survey must be specific to the individual obtaining credit. (i.e.: 2 people cannot be listed on the same survey)
- **You must have a NAB membership**
- Credit is retrieved by you
- Any issues or questions regarding your credit must be directed to NAB customer service.
 - ICAP can verify survey completion and check the roster list
- Due to NAB changes, attendance will be submitted quarterly. ICAP will send an email stating when 2022 credits are ready for retrieval.



Infection Prevention and Control Hotline Number:

Call 402-552-2881

Office Hours are Monday – Friday
8:00 AM - 4:00 PM Central Time

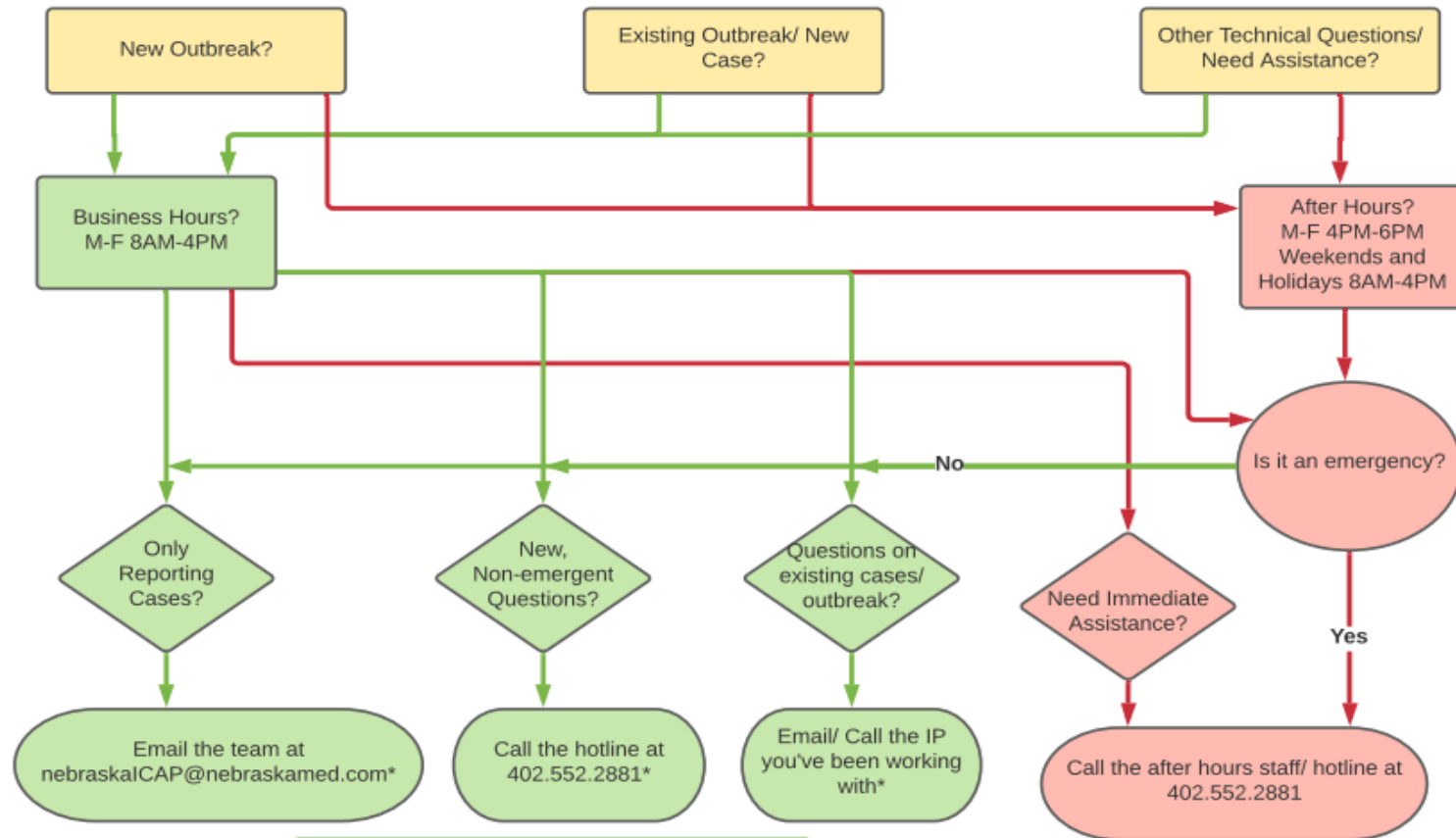
On-call hours are available for emergencies only

Weekends and Holidays from 8:00 AM- 4:00 PM

****Please call the main hotline number only during on-call hours****



Reporting Decision Tree



*Expect response in 1-2 business days

Include following in Communications with ICAP:

- *Facility Name
- *Positive Test Date
- *Is Pos Resident/ Staff?
- *Vaccination Status
- *Symptom Status

Safe Short-term Decisions

- *Start Quarantine/ Isolation
- *Testing Exposed Individuals
- *Start Contact Tracing
- *Restrict Dining/ Activities
- *Follow ICAP "Actions to Take" document

What is an Emergency?

- *Unsure about testing/ isolation strategies
- *Large numbers of new positives
- *Moving residents
- *Questions on COVID-19 Therapeutics

Questions and Answer Session

Use the QA box in the webinar platform to type a question. Questions will be read aloud by the moderator.

Panelists:

- Dr. Salman Ashraf
 - Kate Tyner, RN, BSN, CIC
 - Margaret Drake, MT(ASCP),CIC
 - Sarah Stream, MPH, CDA, FADAA
 - Josette McConville, BSN, RN, CIC
 - Rebecca Martinez, BA, BSN, RN, CIC
 - Jody Scebold, EdD, MSN, RN
 - Chris Cashatt RN, BSN, CIC
 - Daniel Taylor, DHHS
 - Becky Wisell, DHHS
 - Cindy Kadavy, NHCA
 - Kierstin Reed, LeadingAge
 - Melody Malone, PT, CPHQ, MHA
 - Debi Majo, BSN, RN
-
- Moderated by Marissa Chaney
 - Supported by Margaret Deacy
 - Slide support from Sarah Stream and Rebecca Martinez

+	COVID-19 LTCF Webinar Slides
-	COVID-19 LTCF Webinar Recordings

Access the COVID-19 Webinar for LTCF – Recording 04.30.2020 [here](#)

Access the COVID-19 Webinar for LTCF – Recording 04.23.2020 [here](#)

Access the COVID-19 Webinar for LTCF – Recording 04.16.2020 [here](#)

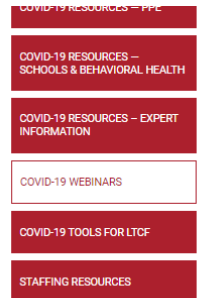
Access the COVID-19 Webinar for LTCF – Recording 04.09.2020 [here](#)

Access the COVID-19 Webinar for LTCF – Recording 04.02.2020 [here](#)

Access the COVID-19 Webinar for LTCF – Recording 03.26.2020 [here](#)

Access the COVID-19 Webinar for LTCF – Recording 03.19.2020 [here](#)

Access the COVID-19 Webinar for LTCF – Recording 03.12.2020 [here](#)



[COVID-19 Webinars - CDC Nebraska Infection Control Assessment & Promotion Program \(nebraskamed.com\)](#)

Don't forget to Like us on Facebook for important updates!

