

ICAP Updates for Local Health Departments

Presented by Nebraska ICAP



Housekeeping

Guidance and responses were provided based on information known on 05.10.22 and may become out of date. Guidance is being updated rapidly, so users should look to CDC and NE DHHS guidance for updates.

Slides and recording from this presentation will be available on the ICAP Website at: <https://icap.nebraskamed.com/covid-19-webinars/>

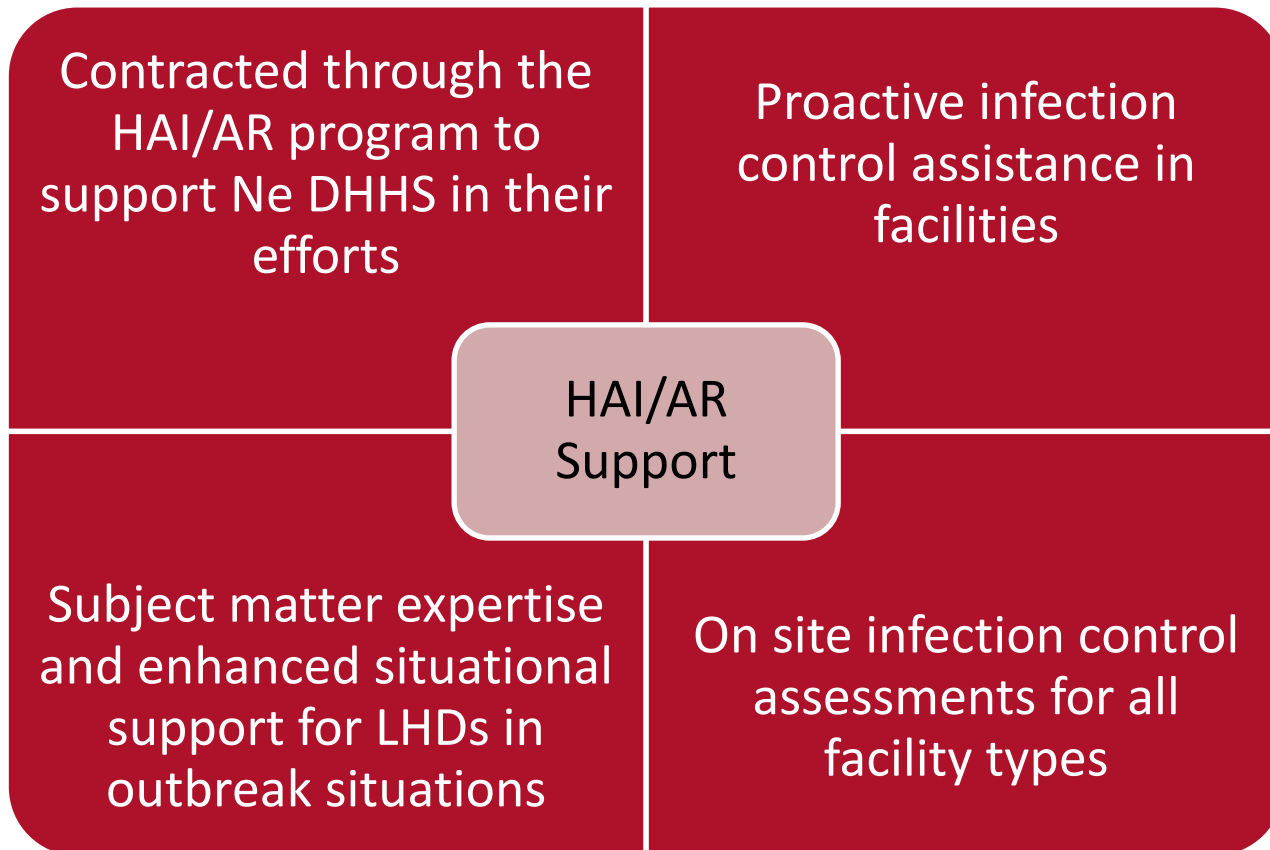
NE ICAP Team

Dr. Salman Ashraf, MBBS	salman.ashraf@nebraska.gov
Sarah Stream, MPH, CDA, FADAA	sstream@nebraskamed.com
Kate Tyner, RN, BSN, CIC	ltyners@nebraskamed.com
Margaret Drake, MT(ASCP),CIC	Margaret.Drake@Nebraska.gov
Sarah Stream, MPH, CDA, FADAA	sstream@nebraskamed.com
Josette McConville, BSN, RN, CIC	jmccconville@nebraskamed.com
Rebecca Martinez, BA, BSN, RN, CIC	remartinez@nebraskamed.com
Chris Cashatt RN, BSN, CIC	ccashatt@nebraskamed.com
Dan German	dgerman@nebraskamed.com
Mounica Souma	msouma@nebraskamed.com
Marissa Chaney	machaney@nebraskamed.com

Ne ICAP Program Overview



Nebraska ICAP Scope of Assistance



Ne ICAP Acute Care Support Program:

Rebecca Martinez, BSN, BA, RN, CIC (remartinez@nebraskamed.com)

Mission:

- Support acute care infection prevention and control programs and professionals

Goals:

- Develop and strengthen infection prevention and control programs

Services:

- Infection control assessments and responses (ICARs) on-site or remote
- Availability of subject matter expertise for questions
- Acute and Outpatient webinars at noon monthly on 2nd and 4th Wednesdays
- Acute care infection preventionist mentorship availability

Working with LHDs

- Collaboration to identify and assist facilities in need of infection control support



Ne ICAP Dental Support Program:

Sarah Stream, MPH, CDIPC, CDA, FADAA (sstream@nebraskamed.com)

Mission:

- Support dental facilities in Nebraska with their infection control needs

Goals:

- Provide infection control support to those in need
- Provide infection control education opportunities that are specific to dentistry

Services:

- On site infection control reviews: ICAR Assessment
- Infection control hotline/ availability
- Dental IP mentoring program
- Mouthy IP: Podcast focused on digestible bits of infection control information in dentistry
- Dental Bites: Monthly infection control newsletter

Working with LHDs

- Collaboration to identify and assist facilities in need of infection control support
- Infection control support for the Nebraska Teeth Forever and the Oral Health Access for Young Children Programs
- One on one assistance for the LHDs for any dental infection control issues



Ne ICAP Dialysis Support Program:

Chris Cashatt, RN, BSN, CIC (ccashatt@nebraskamed.com)

Mission:

- Support Dialysis Infection Prevention and Control Programs

Goals:

- Build and Strengthen General Infection Prevention and Control Capacity

Services:

- Free IPC (Infection Prevention and Control) Assessments
- Identify IPC Gaps and Strategies to Mitigate
- Serve as an Expert Resource

Working with LHDs

- Collaborate with ESRD Networks to Plan, Develop, and Implement Quality Improvement Concepts and Strategies



Ne ICAP Long Term Care Support Program:

Margaret Drake, MT(ASCP),CIC (Margaret.Drake@Nebraska.gov)

Mission:

- Support Infection Control program development and Infections control professionals in LTC

Goals:

- Encourage program development
- Offer support and education

Services:

- COVID 19 outbreak support
- ICARS
- General infection control resources
- Training resources

Working with LHDs

- Advise, when necessary, on outbreaks of any organism
- Work with LHD on containment of infectious diseases
- Work with LHD on testing and resources for testing



Ne ICAP Outpatient Support Program:

Joseette McConville, RN, CIC (jmconville@nebraskamed.com)

Mission:

- Support ambulatory clinics in Nebraska with their infection control needs

Goals:

- Provide infection control support to those in need
- Provide infection control education opportunities that are specific to ambulatory clinics

Services:

- On site infection control reviews: ICAR Assessment
- Infection control hotline/ availability
- Ambulatory IP mentoring program

Working with LHDs

- Collaboration to identify and assist facilities in need of infection control support
- One on one assistance for the LHDs for any infection control issues



Ne ICAP School Nurse Support Program:

Chris Cashatt, RN, BSN, CIC (ccashatt@nebraskamed.com)

Mission:

- Support Schools to Promote IPC (Infection Prevention & Control) Programs and In-Person Learning

Goals:

- Complete School Assessments to Identify IPC Gaps in Nebraska Schools

Services:

- Provide Assessments to Assess and Identify Gaps in School IPC Programs
- Identify Resources to Mitigate Identified IPC Gaps
- Develop IPC Training Program For Schools

Working with LHDs

- Collaborate with DHHS to Identify School IPC Needs
- Identify IPC Gaps and Develop Training Opportunities



Current Events and Updates



Updated Eye Protection Risk Assessment

Universal Use Eye Protection Risk Assessment for Green Zone

Level of community transmission for facility county should be determined for facility using this link: [CDC COVID Data Tracker](#)

	Low	Moderate	Substantial	High
New cases per 100,000 persons in the past 7 days*	<10	10-49.99	50-99.99	≥100
Percentage of positive NAATs tests during the past 7 days**	<5%	5-7.99%	8-9.99%	≥10.0%

Current Facility Community Transmission is _____

- Universal eye protection (i.e., goggles or a face shield that covers the front and sides of the face) should be worn during ALL patient care encounters for counties with Substantial to High community transmission.
- Eye Protection should be worn based on standard precautions in areas with Low to Moderate community transmission.



Updated Admission, Readmission, Outing Risk Assessment



Updated 4/28/2022

ICAP Suggested Plan for Managing New Admissions, Readmissions and Return from Community Outings

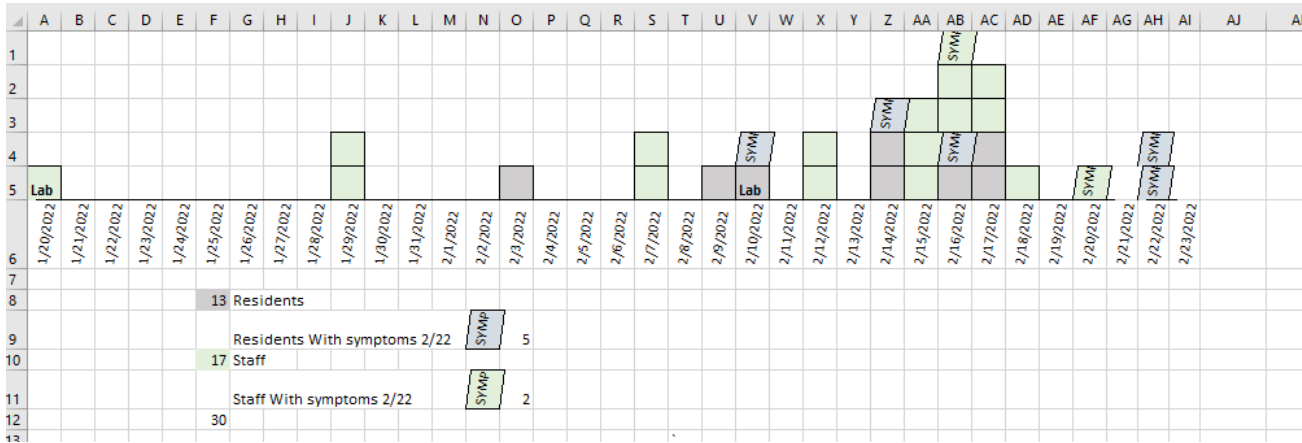
Suggested Plan for Residents with Up-to-Date¹ Vaccine Status:

- Screen for symptoms, if symptoms identified:
 - Use [light red zone protocol](#)
 - Test and if antigen is negative, obtain confirmation PCR
- Screen for exposure, if exposure identified:
 - If exposed (prolonged close contact within 6 feet for a cumulative 15 minutes or more over a 24-hour period) to a person with SARS-CoV-2 infection in the prior 7 days then use [modified yellow zone protocol](#)³.
 - Start on a testing plan for 7 days^{3,4}.
- If no known exposure or symptoms, but high risk scenario is identified on [Risk Assessment](#)
 - Use [green zone protocol](#)⁵.
 - Start on a testing plan for 7 days^{3,4}.
- If no known exposure or symptoms, but high risk scenario is not identified on [Risk Assessment](#)
 - Use green zone protocol
 - Testing plan may be deferred

ICAP Suggested Plan for Managing Admissions, Readmissions, and Community Outings
COVID-19 Outing Risk Assessment Template



Example of how ICAP can assist LHD during an outbreak

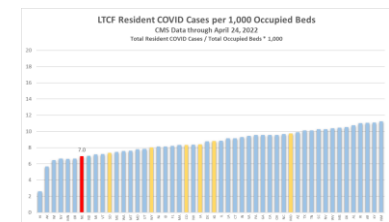
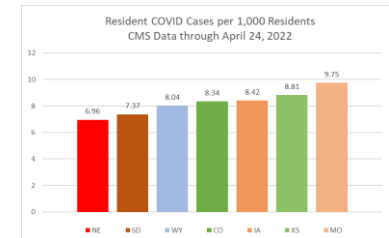
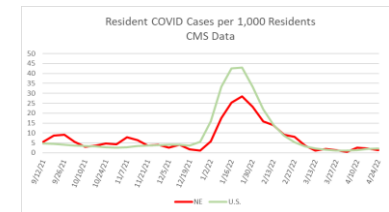
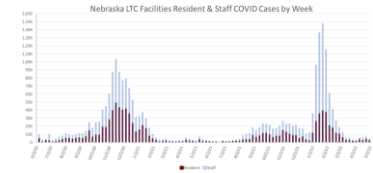


- ICAP consulted by the skilled care facility for assistance related to an ongoing GI illness outbreak
- ICAP connected with the local health department team [figure credit to local health department team]
- On-site infection prevention and control technical assistance visit scheduled
- Findings:
 - Fabric resident care lift slings shared between residents, no routine laundering schedule
 - Bathroom disinfectant product used without proper contact time
 - Gloves stored within toilet splash zone
 - Paper menus were completed by residents and returned to the kitchen, used during food prep



ICAP Data

- ICAP leverages COVID data from NHSN, CMS, and other sources for LTC facilities.
- Positive cases are identified each day; IPs contacts the facilities to assist.
- 14-day positive facility-level case reports are provided to the LHDs every week (SBAR).
- LHDs can request custom reports for specific needs - grant reporting, trend analysis, etc.
- NHSN vaccination data at a facility and LHD jurisdiction level is available including number of individuals who completed COVID vaccination and number who received an additional dose (residents and healthcare professionals).
- State-level CMS data for LTC facilities for comparison – neighboring states, U.S. total, etc.



Upcoming Events



Big News! Website Redesign Announcement

Mission:

- Provide healthcare facilities and personnel with more up-to-date information on infection control news, resources, and training
- Improve navigability to ensure visitors could find what they're looking for as quickly and easily as possible

Goals:

- To better user experience
- To improve look and feel of the pages
- To improve overall site functionality and performance

What's New?

- News
- Events
- Video library
- Social media feed

Launch Date:

- Mid June

Working with LHDs

- Collaboration to promote newly designed ICAP website to facilities



Acute and OP Webinar: Upcoming Topics of Interest for LHDs

Join us for our next webinar on May 11th to discuss What's New with MDROs; CRE - Why Do We Care?

Upcoming webinar on May 25th will discuss "Antimicrobial Stewardship - Not Just for Hospitals"

This webinar occurs every 2nd and 4th Wednesday of the month. You can find the registration and login information for this recurring webinar at: <https://icap.nebraskamed.com/covid-19-cah-webinar-invite/>





Infection Control Training For Your Facility

- Project Firstline is Infection Control (IC) training for your frontline healthcare workers
- Why is it important? Infection Control:
 - Works! The right practices can stop germs from spreading in healthcare facilities.
 - Is a Team Effort! Infection control is most effective when all team members use it consistently.
 - Matters! Infection control is a critical part of safe healthcare delivery in all healthcare settings.
- To find out more or to schedule a training for your facility, scan the QR code or visit: icap.nebraskamed.com/project-firstline/

Where can you find us?



Follow us on Facebook at @NebraskaICAP or <https://www.facebook.com/NebraskaICAP/>



Follow us on Twitter at @dirty_drinks and @Mouthy_IP



Listen to Dirty Drinks and The Mouthy IP wherever you listen to podcasts!



Find resources for all facility types at our website: <https://icap.nebraskamed.com/>



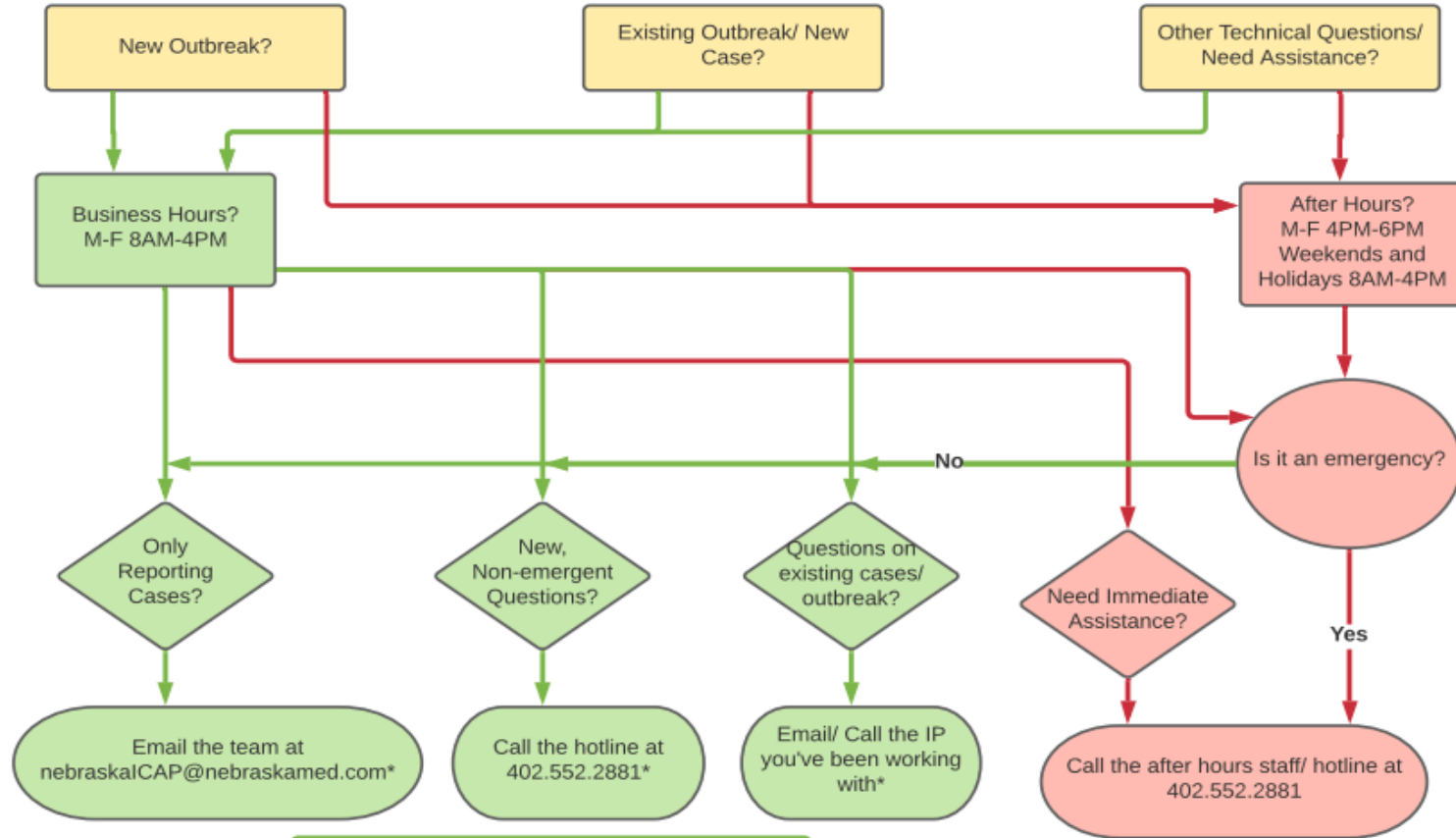
We're here for you!

Nebraska ICAP is funded to answer infection prevention and control questions from healthcare settings, not just LTC

Feel free to contact us to be connected with an Infection Preventionist and Medical Director to help walk you through any questions you may have



Reporting Decision Tree



Expect response in 1-2 business days

Include following in Communications with ICAP:

- *Facility Name
- *Positive Test Date
- *Is Pos Resident/ Staff?
- *Vaccination Status
- *Symptom Status

Safe Short-term Decisions

- *Start Quarantine/ Isolation
- *Testing Exposed Individuals
- *Start Contact Tracing
- *Restrict Dining/ Activities
- *Follow ICAP "Actions to Take" document

What is an Emergency?

- *Unsure about testing/ isolation strategies
- *Large numbers of new positives
- *Moving residents
- *Questions on COVID-19 Therapeutics

Nebraska ICAP Support

Call: 402-552-2881

Email: nebraskalCAP@nebraskamed.com

Office Hours are Monday – Friday

8:00 AM - 4:00 PM Central Time

Weekends and Holidays 8:00-4:00

On-call hours are available for emergencies only

Facility Support Available For:

Acute Care Facilities

Outpatient Facilities

Ambulatory Clinics

Long Term Care Facilities

Dental Facilities

Dialysis Facilities

School Health Programs

Other Healthcare Facilities

